

## Driver Installation

On Windows XP/ Vista / 7 / 8

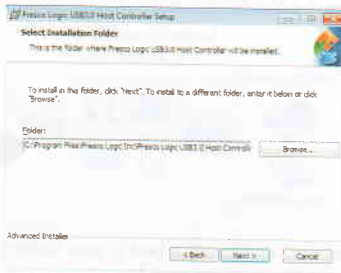
To Install the Driver:

Insert the provided CD into CD-Rom locates and double-click the Installation Program.

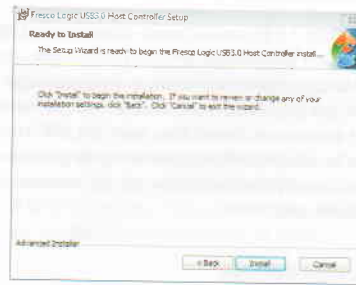
When the following screen show up, please click **Next** to install the Driver.



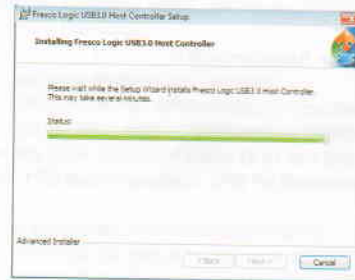
Please click **Browse** to choose the Destination Folder. After that, please click **Next**.



After Click **Install** to install USB 3.0 Host Controller Driver.



This may take several minutes.



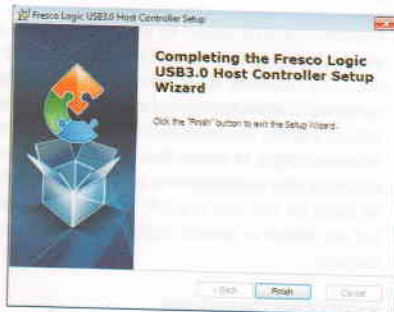
## USB 3.0 PCI-E/Express Card

4

## USB 3.0 PCI-E/Express Card

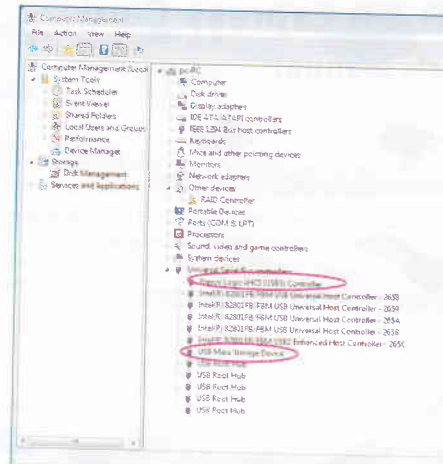
5

Please click **Finish** to complete the USB 3.0 Host Controller Setup Wizard.



## Installation Verification

After finishing driver installation and plugging this USB 3.0 Card to your computer, the system will detect the device. You can go to Device Manager to verify the entire installation.



### WEEE Directive & Product Disposal



At the end of its serviceable life, this product should not be treated as household or general waste. It should be handed over to the applicable collection point for the recycling of electrical and electronic equipment, or returned to the supplier for disposal.

## USB 3.0 PCI-E/Express Card

6

## USB 3.0 PCI-E/Express Card

7